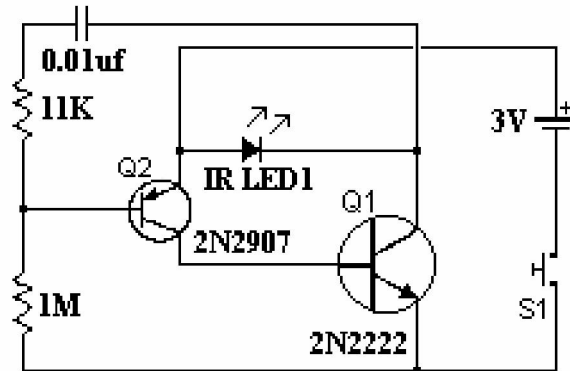
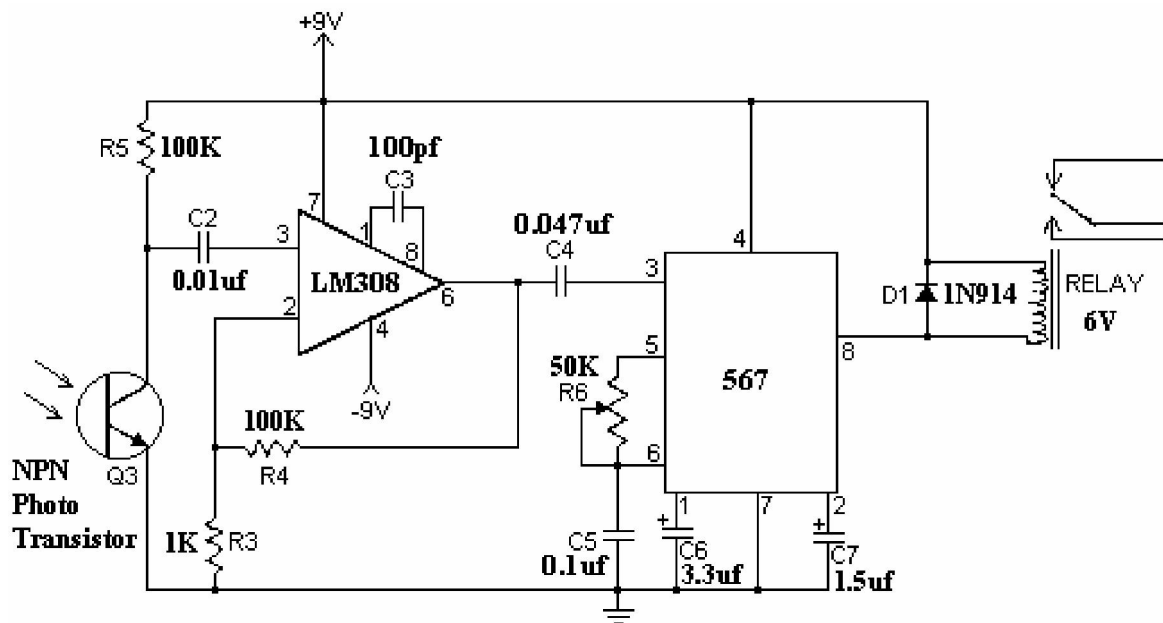


# Infrarood (IR) Alarm

## Transmitter:



## Receiver:



This circuit consists of two parts, the first part will transmit a signal, and the second part will detect that signal and trigger a relay. To adjust the circuit, hold down S1 while pointing LED1 at the receiver. Adjust R6 until you hear the relay click. You can increase range by using a high output LED for LED1. Bright light will stop the receiver from responding to the transmitter.