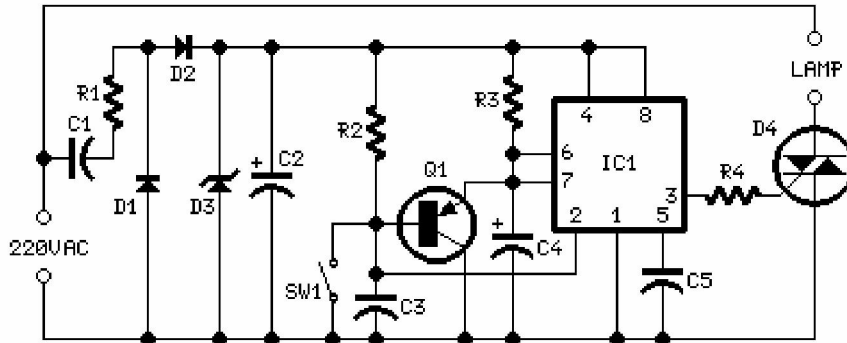


# Courtesy Light

15 seconds delayed switch-off. A good idea for bedroom lamps



R1	_____	470R	1/2W Resistor
R2	_____	100K	1/4W Resistor
R3	_____	1M5	1/4W Resistor
R4	_____	1K	1/4W Resistor
C1	_____	330nF	400V Polyester Capacitor
C2	_____	100µF	25V Electrolytic Capacitor
C3,C5	_____	10nF	63V Polyester or Ceramic Capacitors
C4	_____	10µF	25V Electrolytic Capacitor
D1,D2	_____	1N4007	1000V 1A Diodes
D3	_____	BZX79C10	10V 500mW Zener Diode
D4	_____	TIC206M	600V 4A TRIAC
Q1	_____	BC557	45V 100mA PNP Transistor
IC1	_____	7555 or TS555CN	CMos Timer IC
SW1	_____		SPST Mains suited Switch

## Device purpose:

This circuit is intended to let the user turn off a lamp by means of a switch placed far from bed, allowing him enough time to lie down before the lamp really switches off. Obviously, users will be able to find different applications for this circuit in order to suit their needs.

## Circuit operation:

Due to the low current drawing, the circuit can be supplied from 220Vac mains without a transformer. Supply voltage is reduced to 10Vdc by means of C1 reactance, a two diode rectifier cell D1 & D2 and Zener diode D3. IC1 is a CMOS 555 timer wired as a monostable, providing 15 seconds on-time set by R3 & C4. When SW1 is closed, IC1 output (pin 3) is permanently on, driving Triac D4 which in turn feeds the lamp. Opening SW1 operates the monostable and, after 15 seconds, pin 3 of IC1 goes low switching off the lamp.

## Notes:

- The circuit is wired permanently to the mains supply but current drain is negligible.
- Due to transformerless design there is no heat generation.
- The delay time can be varied changing R3 and/or C4 values.
- Taking C4=10µF, R3 increases timing with approx. 100K per second ratio. I.e. R3=1M Time=10 seconds, R3=1M8 Time=18 seconds.
- Low Gate-current Triacs are recommended.
- Use a well insulated mains-type switch for SW1.

**Warning!** The circuit is connected to 220Vac mains, then some parts in the circuit board are subjected to **lethal potential!**. Avoid touching the circuit when plugged and enclose it in a plastic box.